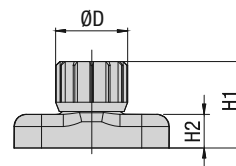
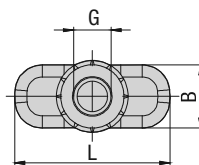


Hexagon Rail Nut
(for Use with Mounting Rail TS)
Type SM / SMG

A



Ordering Codes

Hexagon Rail Nut *SM-*1-8/1D-*M-*W3

* Hexagon Rail Nut

Carbon Steel	SM
Stainless Steel	SMG

* STAUFF Group 1 to 8 (DIN Group 0 to 8) **1-8/1D**

* Thread code

Metric ISO thread	M
Unified coarse (UNC) thread	U

* Material code

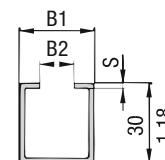
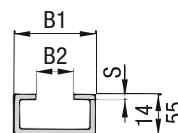
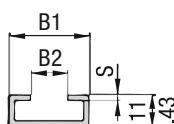
Carbon Steel, zinc/nickel-plated	W3
Stainless Steel V2A	W4
1.4301 / 1.4305 (AISI 304 / 303)	
Stainless Steel V4A	W5
1.4401 / 1.4571 (AISI 316 / 316 Ti)	

Group STAUFF	DIN	Dimensions (mm/in)						Ordering Codes (Standard Options)
		Thread G	L	B	H1	H2	ØD	
1	0							
1A	1							
2	2							
3	3							
4	4	M6	25,5	10,4	14,2	5,5	12	SM-1-8/1D-M-W3 SM-1-8/1D-U-W3
		1/4-20 UNC	1.00	.41	.56	.22	.47	
5	5							
6	6							
7	7							
8	8							

Hexagon Rail Nuts, type SM-1-8/1D are also suitable for Twin Series, STAUFF Group 1D.

All threaded parts are available with Metric ISO thread or unified coarse (UNC) thread according to dimension table. Alternative materials and surface finishings are available upon request. Contact STAUFF for further information.

Mounting Rail
(for Use with Hexagon Rail Nut SM / SMG)
Type TS



Ordering Codes

Mounting Rail *TS-*11-*1M-*W1

* Mounting Rail **TS**

* Height of rail

11 mm / .43 in	11
14 mm / .55 in	14
30 mm / 1.18 in	30

* Length of rail

1 m / 3.28 ft	1M
2 m / 6.56 ft	2M

Alternative lengths available upon request. Contact STAUFF for further information.

* Material code

Carbon Steel, uncoated	W1
Carbon Steel, hot-dip galvanised	W98
Stainless Steel V2A	W4
1.4301 / 1.4305 (AISI 304 / 303)	
Stainless Steel V4A	W5
1.4401 / 1.4571 (AISI 316 / 316 Ti)	

Group STAUFF	DIN	Dimensions (mm/in)			Ordering Codes (Standard Options)	
		B1	B2	S	Length of Rail: 1 m / 3.28ft	Length of Rail: 2 m / 6.56ft
1	0					
1A	1				Height 11 mm / .43 in TS-11-1M-W1	Height 11 mm / .43 in TS-11-2M-W1
2	2					
3	3					
4	4	28	11	2	Height 14 mm / .55 in TS-14-1M-W1	Height 14 mm / .55 in TS-14-2M-W1
		1.10	.43	.08		
5	5					
6	6					
7	7				Height 30 mm / 1.18 in TS-30-1M-W1	Height 30 mm / 1.18 in TS-30-2M-W1
8	8					

Mounting Rails, type TS-11/14/30 are suitable for all Standard Series and Twin Series group sizes. Alternative materials and surface finishings are available upon request. Contact STAUFF for further information.

